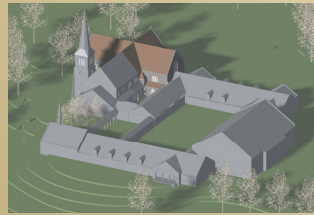
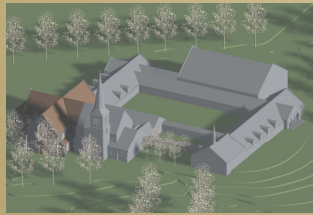


TERRY BYRD EASON DESIGN

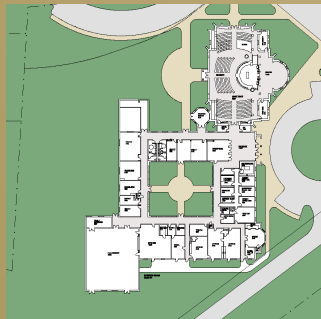
LITURGICAL DESIGN CONSULTATION MASTER PLANNING



North Elevation with Stone Façade Option



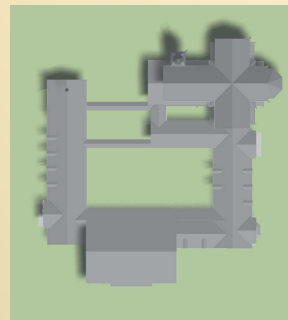
East Elevation with Brick Façade Option



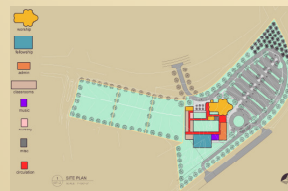
Phase I & Phase II



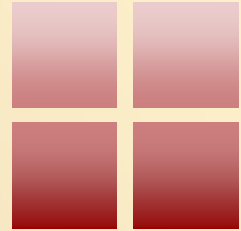
Phase III & Phase IV



Roof Plan



Site Plan



1117 Fearington Post
Pittsboro, NC 27312

phone: (919) 968-0445

www.terrybyrdeasondesign.com

Church Master Plan

Project

This is a building complex designed to be built in several phases relating to the scope of the various fund raising efforts, starting with a substantial portion of the main permanent worship space.

We determined the program requirements, set priorities, to identify phasing alternatives, layed out the functional requirements and adjacencies, and establish the desired architectural character for the building complex. The master plan will allow the church to grow flexibly over time while maintaining a vision of the future built-out campus, including eventually doubling the size of the main worship space and adding a tower.

Eason & Farlow Design, PA produced all the presentation materials in-house including 3-D computer animations & modeling. While traditional in form, this church space has a gathered seating arrangement, a flexible choir with space for a future pipe organ, and courtyards and gathering spaces near the future nave entrance.



Perspective View at Tower Entry